

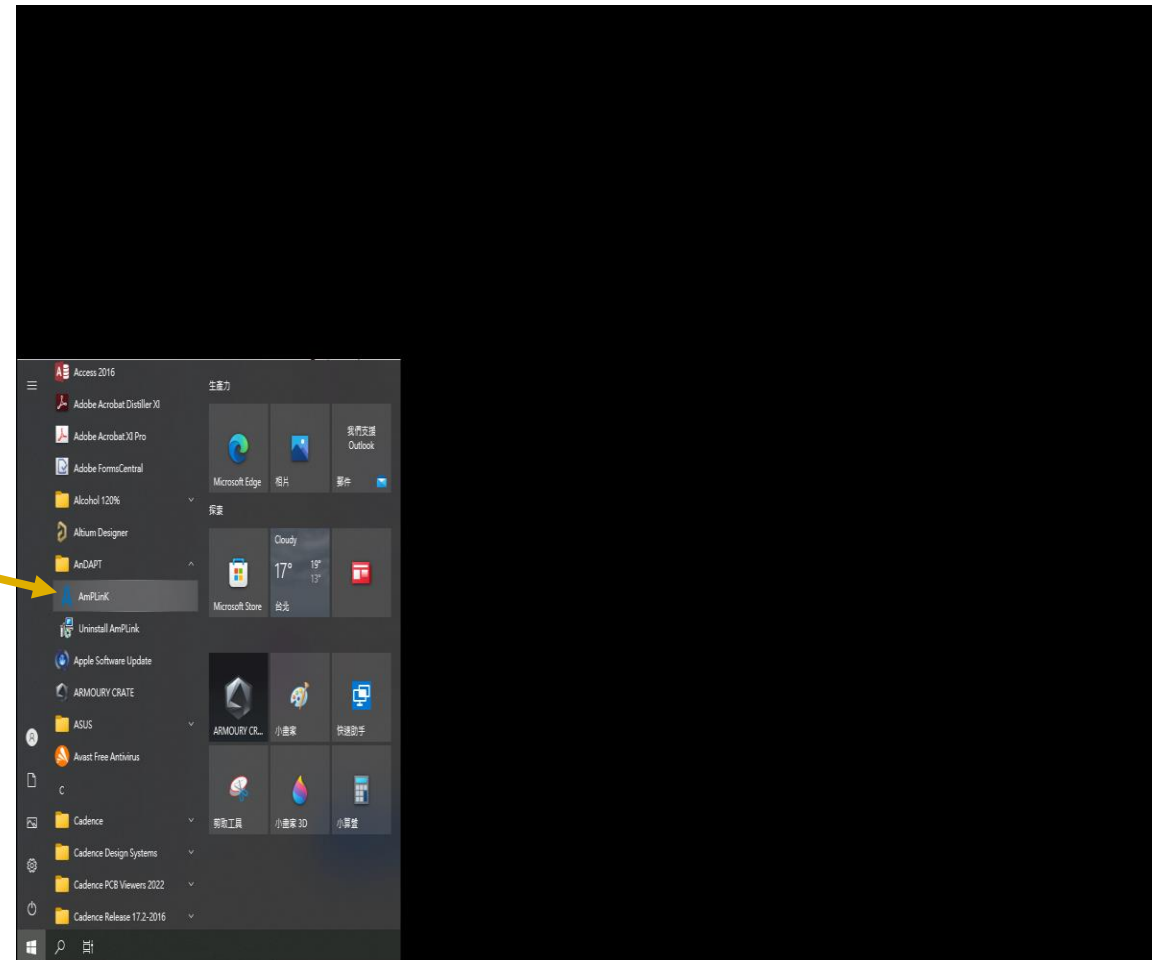


AnDAPT

Native Application of AmPLink User Guide

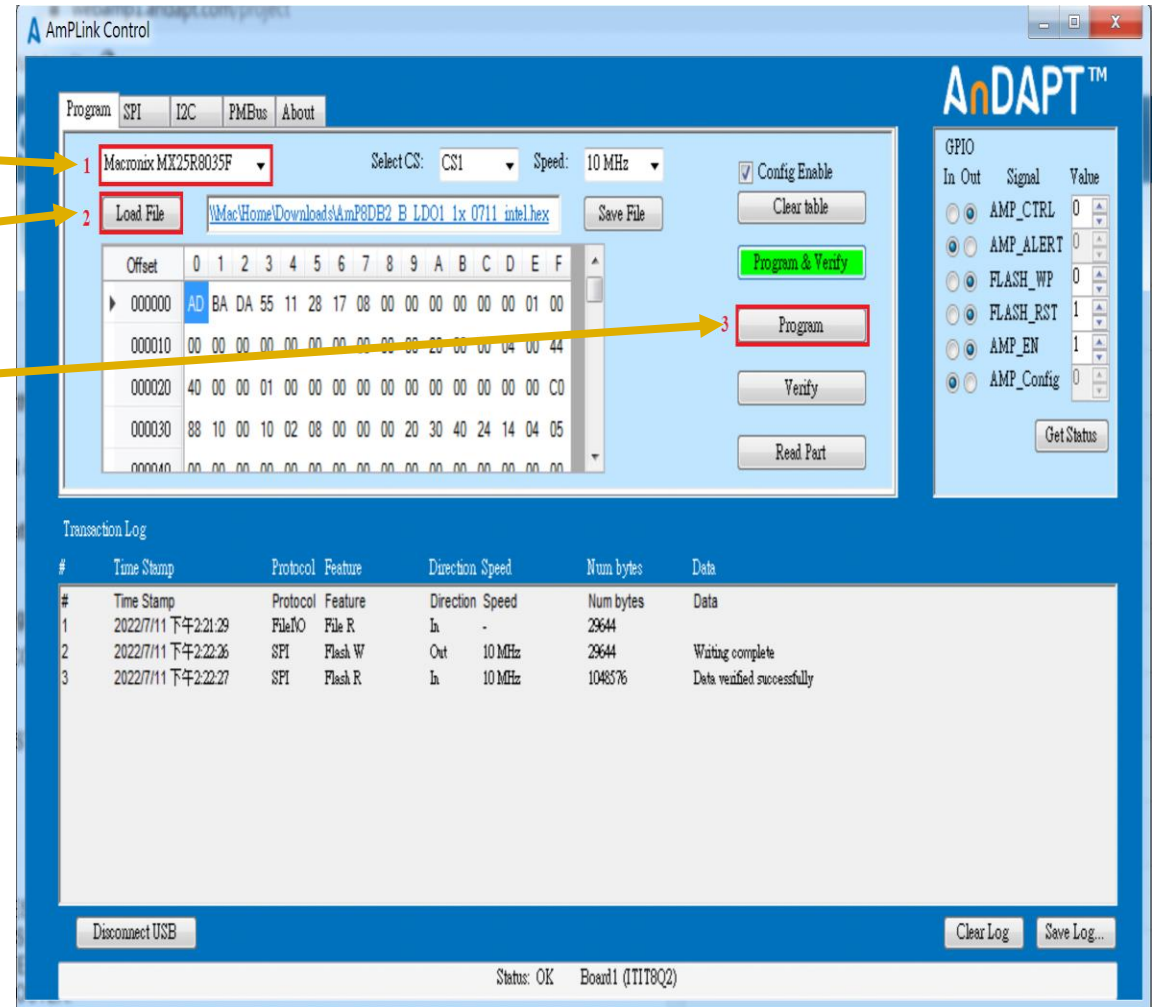
Start

1. Please connect AmPLink adapter between PC and the board, then supplied input voltage to the board.
2. Open native application.



Steps: Program Flash

1. Select Device(Macronix MX25R8035F)
2. Load hex file
3. Press Program



Result

The screenshot displays the AnDAPT AmPLink Control software interface. The main window is titled "AmPLink Control" and features a blue header with the AnDAPT logo. The interface is divided into several sections:

- Program Selection:** A dropdown menu shows "Macronix MX25R8035F". Other settings include "Select CS: CS1" and "Speed: 10 MHz". A "Config Enable" checkbox is checked.
- File Management:** A "Load File" button is next to the file path "W:\Mac\Home\Downloads\AmP8DE2_B LDO1 1x 0711 intel.hex". A "Save File" button is also present.
- Memory Map:** A table showing memory addresses (Offset) and their corresponding hexadecimal values. The address 000000 is highlighted in blue.
- Control Buttons:** A "Program & Verify" button is highlighted in green. Other buttons include "Clear table", "Program", "Verify", and "Read Part".
- GPIO Configuration:** A panel on the right lists GPIO pins with their In/Out status, Signal names, and Values. The signals listed are AMP_CTRL (0), AMP_ALERT (0), FLASH_WP (0), FLASH_RST (1), AMP_EN (1), and AMP_Config (0). A "Get Status" button is at the bottom.
- Transaction Log:** A table at the bottom shows the history of operations. The most recent entry is highlighted in red and labeled "Result".

#	Time Stamp	Protocol	Feature	Direction	Speed	Num bytes	Data
#	Time Stamp	Protocol	Feature	Direction	Speed	Num bytes	Data
1	2022/7/11 下午2:21:29	FileIO	File R	In	-	29644	
2	2022/7/11 下午2:22:26	SPI	Flash W	Out	10 MHz	29644	Writing complete
3	2022/7/11 下午2:22:27	SPI	Flash R	In	10 MHz	1048576	Data verified successfully

At the bottom of the window, there is a "Disconnect USB" button, "Clear Log" and "Save Log..." buttons, and a status bar showing "Status: OK Board1 (ITIT8Q2)".



AnDAPT

One Program Header
for more than 2 Flash

Program 2nd or 3rd Flash

1. Select Device(Macronix MX25R8035F)
2. Load hex file
3. Select CS2(for second Amp Chip), CS3(for third Amp Chip)
4. Unclick Config Enable
5. Press Program & Verify

